

Standard Rubber Press – Standard Silicone Press



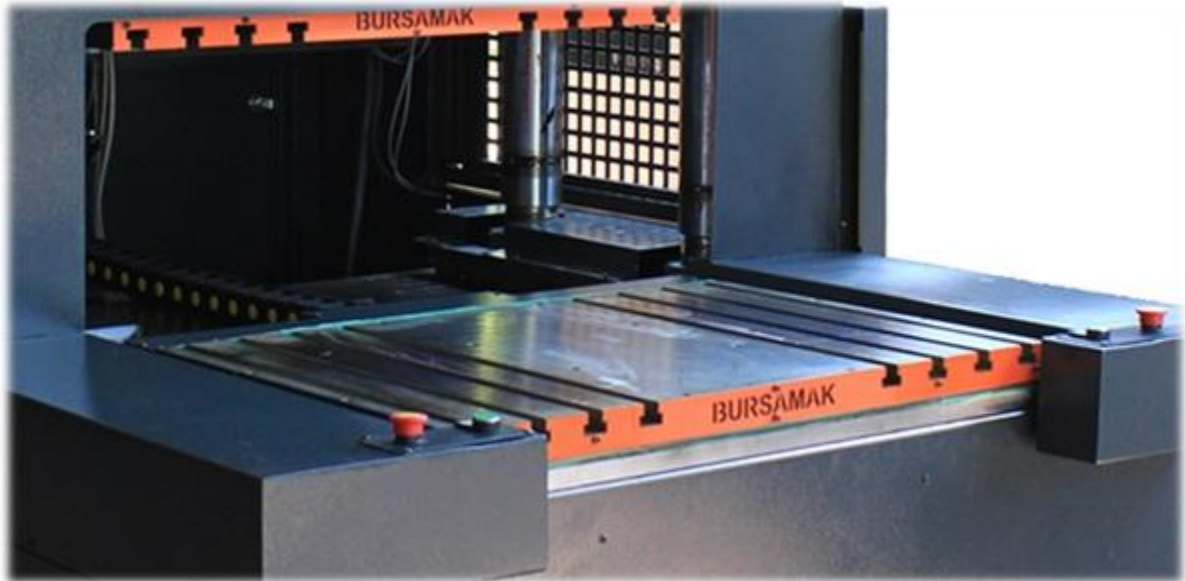
Standard Rubber Press – Standard Silicone Press



BURSAMAK
MACHINE / AUTOMATION
www.bursamak.com

Standard Rubber Press – Standard Silicone Press

Hydraulic Sliding Table



The hydraulically sliding lower table brings the mold in front of the operator, making loading and unloading easier. Because the upper table doesn't need to be raised as much and the operator can work more easily, your production time is significantly reduced.

Middle and Side Extractor Mechanism



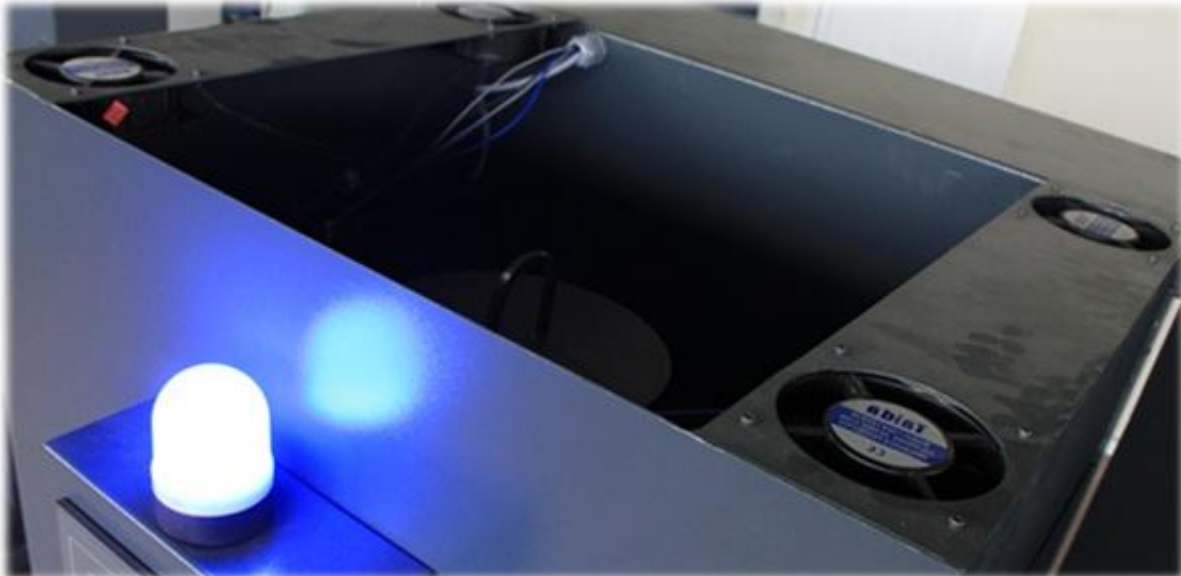
Hydraulically operated center and side ejectors allow you to automatically eject products from the mold. This significantly reduces production time and increases production volume.

Hydraulic Oil Cooling Unit



With the oil cooling unit in our presses, the machine automatically cools the hydraulic oil when the temperature exceeds the one you specify, and thus you will not experience any power loss and your felt life will be extended.

Ventilation



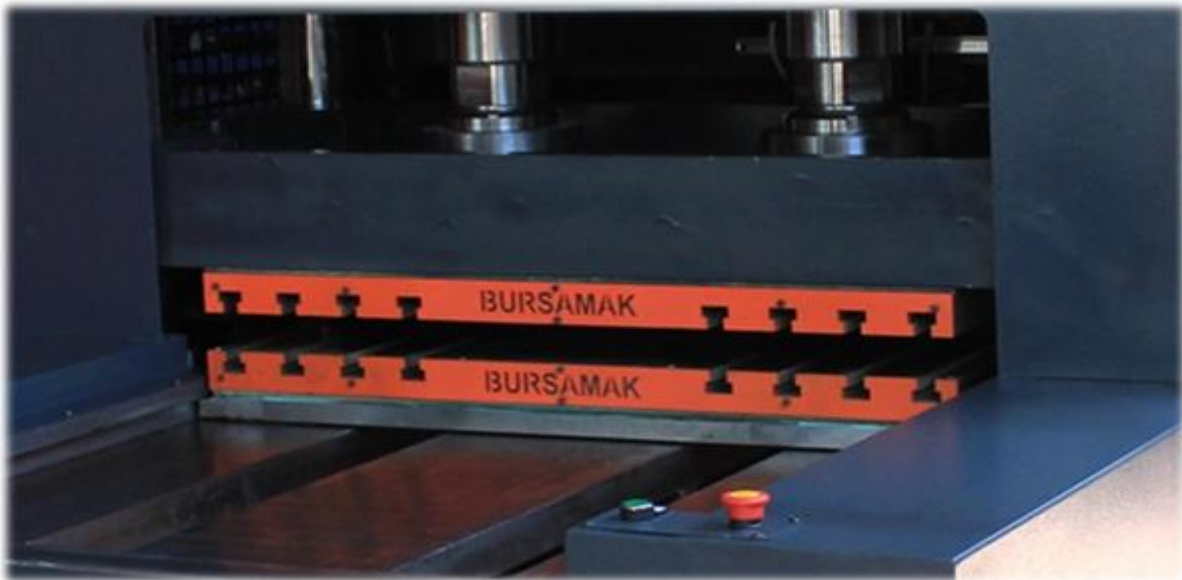
Harmful gases and excess heat are removed from the operator with the ventilation fans in our presses.

Safety Light Barrier



Possible work accidents are prevented with the light barrier on our presses.

Automatic Degassing



You can adjust all degassing parameters in detail on our presses. Degassing frequency, rise distance, hold at top, and re-press parameters are all customizable.

Automatic Operation and Shutdown

OTOMATİK BAŞLATMA			ZAMAN AYARI	11/11/1111 11:11:11
PAZARTESİ (AKTİF)	7	30	LANGUAGE	
SALI (AKTİF)	7	30	TURKCE	ENGLISH
ÇARŞAMBA (AKTİF)	7	30	BUZZER PARAMETRELERİ	
PERŞEMBE (AKTİF)	7	30	Alarm Buzzer Çalışma Süresi	20
CUMA (AKTİF)	7	30	Operatör Bekleme Sırasında Buzzer Süresi	50
CUMARTESİ (PASİF)	0	0	Operatör Boşta Bekleme Süresi (sn.)	60
PAZAR (PASİF)	0	0	VARDIYA BAŞLANGIÇ SAATLERİ	
OTOMATİK RESET (AKTİF)	30 dk		1. Vardiya Başlama Saati	0 : 0
			2. Vardiya Başlama Saati	8 : 0
			3. Vardiya Başlama Saati	16 : 0

You can pre-set the day and time to ensure the press is preheated and ready for production. You can also set it to automatically shut off at your preferred time if it's not used for an extended period.

Electronic Pressure Monitoring



Our presses constantly monitor pump pressure via a PLC, ensuring the health of the hydraulic system and the press's load status. You can also monitor current pressure values on the screen.

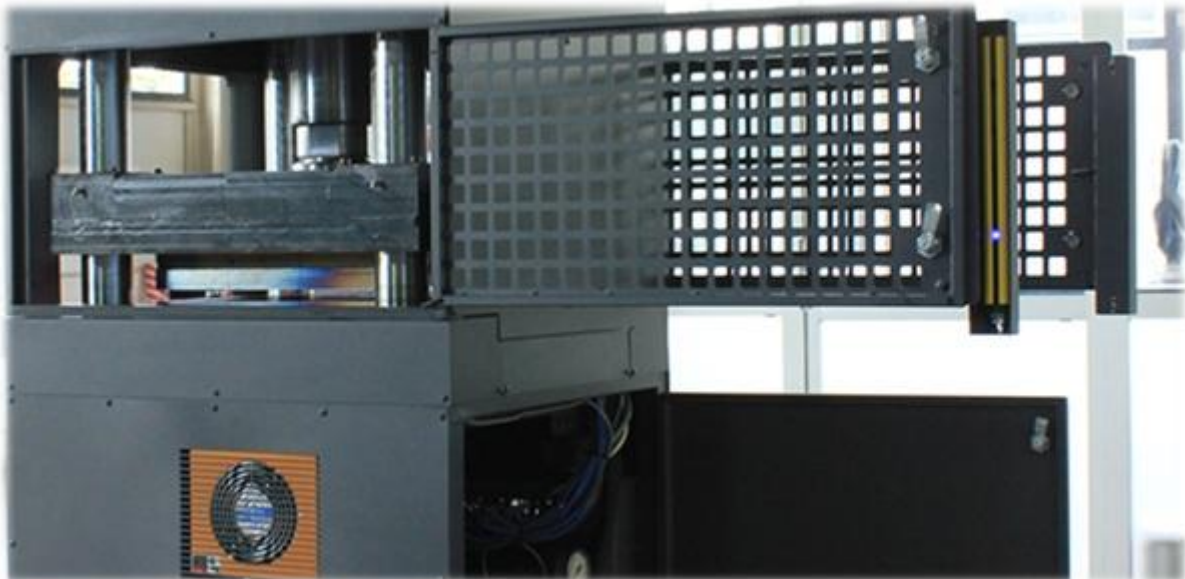
Standard Rubber Press – Standard Silicone Press

Easy to Use Interface



Although our presses offer a wide range of features and customization options, the main control panel is very simple and self-explanatory. The operator is informed about their actions and the required values are displayed in real time. Values such as temperature and cooking time are easily adjusted.

Easy Access



Our machines' opening covers and wide column spacing make it easy to attach and detach molds. The hydraulic unit and electrical panel are easily accessible by opening the covers. For service and maintenance, easily removable service plates allow access to any location in minutes.

Compact Design



All hydraulic and electrical components of our presses are self-contained, allowing them to take up minimal space in your production area.

Automatic Lubrication



Our presses feature automatic lubrication to prevent wear on the columns and sliding table. This ensures years of maintenance-free operation.

Mold Parameters Memory

RCPNO	RCPNO Name	Ust Sıcaklık	Alt Sıcaklık	Gaz Alma	Baskı Süresi	Pişirme Süresi	Çıkancı	GözAdedi
1	BURC KALIBI	165	165	2	20	180	1	6
2	TAKOZ KALIBI	170	170	3	30	200	0	4
3	3	0	0	0	0	0	0	0
4	4	0	0	0	0	0	0	0
5	5	0	0	0	0	0	0	0
6	6	0	0	0	0	0	0	0
7	7	0	0	0	0	0	0	0
8	8	0	0	0	0	0	0	0
9	9	0	0	0	0	0	0	0
10	10	0	0	0	0	0	0	0
11	11	0	0	0	0	0	0	0
12	12	0	0	0	0	0	0	0
13	13	0	0	0	0	0	0	0
14	14	0	0	0	0	0	0	0
15	15	0	0	0	0	0	0	0

You can save 1000 molds with their names and all their parameters on our presses. When changing molds, you can adjust all parameters simply by selecting the mold.

Operator Delay Warning



If the operator cannot complete the loading/unloading process within the specified time, an audible and visual warning is given. You can also adjust the audible warning duration.

Heating Technology



Our presses constantly monitor their resistances and relays, alerting the operator in the event of a malfunction. PID heating and optimized parameters maintain the temperature at the desired value with greater precision, ensuring temperature stability.

Shift Production Tracking

	01	02	03	04	05	06	07	08	09	10	11
1. VARDIYA	0	0	0	0	0	0	0	0	0	0	0
2. VARDIYA	0	0	0	0	0	0	0	0	0	0	0
3. VARDIYA	0	0	0	0	0	0	0	0	0	0	0
	12	13	14	15	16	17	18	19	20	21	
1. VARDIYA	0	0	0	0	0	0	0	0	0	0	
2. VARDIYA	0	0	0	0	0	0	0	0	0	0	
3. VARDIYA	0	0	0	0	0	0	0	0	0	0	
	22	23	24	25	26	27	28	29	30	31	TOPLAM
1. VARDIYA	0	0	0	0	0	0	0	0	0	0	0
2. VARDIYA	0	0	0	0	0	0	0	0	0	0	0
3. VARDIYA	0	0	0	0	0	0	0	0	0	0	0

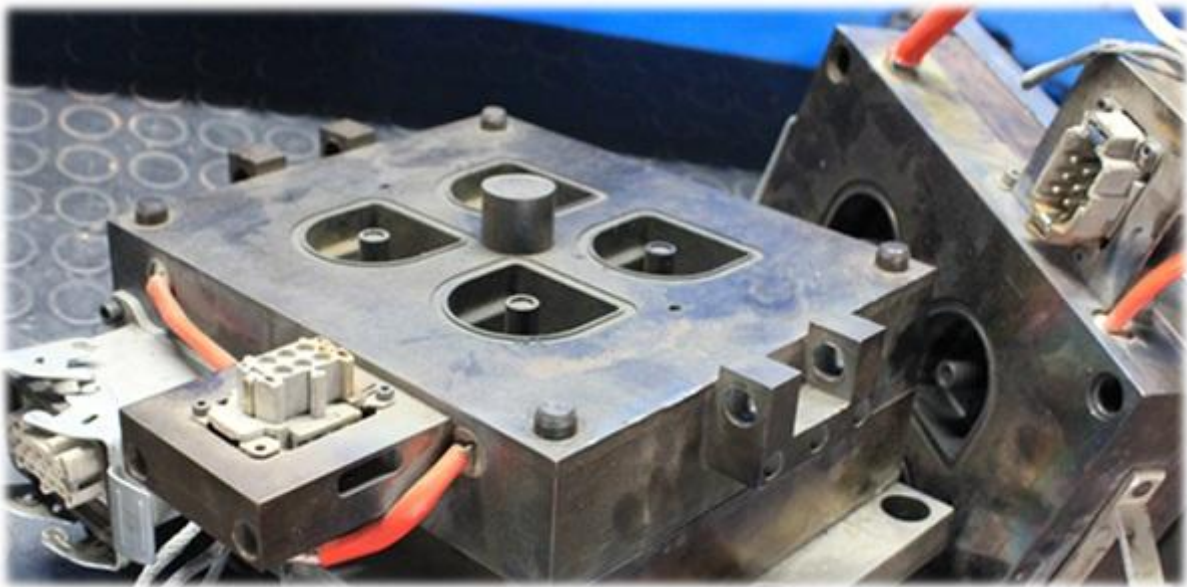
Our presses store production data from the last three months of shifts in their immutable memory. You can access production data retroactively.

Electrical Safety



Our presses protect the machine by instantly checking the input voltage and phase direction. Each component is isolated from the system by a separate fuse.

Direct Mold Heating



Our presses can optionally be heated directly by attaching a resistance to the mold. The press automatically monitors the resistance and mold temperature, ensuring you get the best product possible.

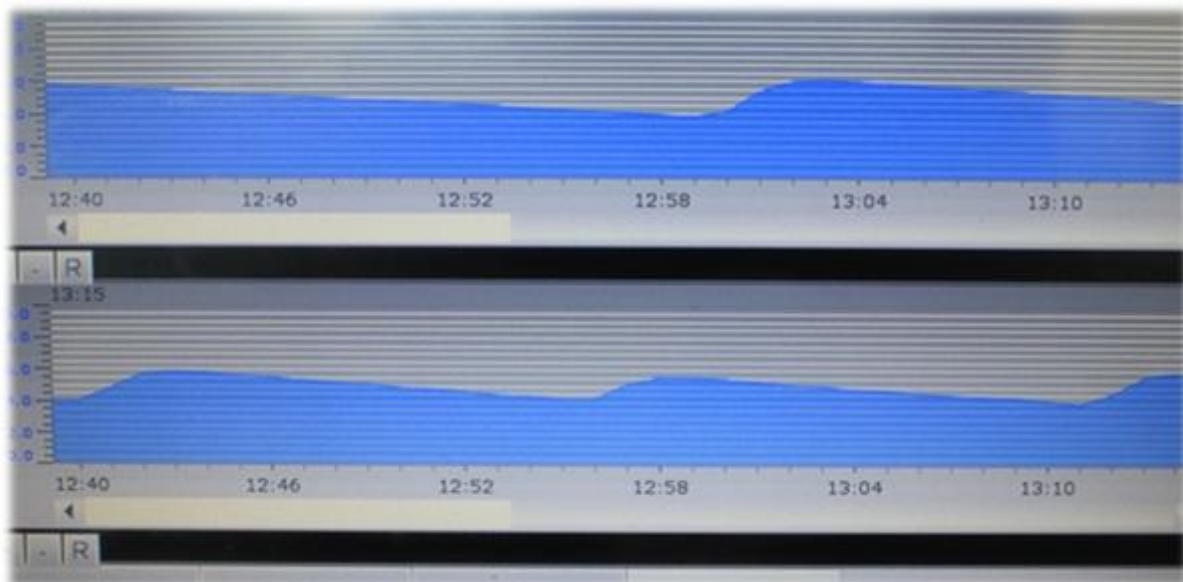
Standard Rubber Press – Standard Silicone Press

Server Connection and Remote Control



By connecting our presses to your workplace network, you can transfer live production quantities, machine status, and idle times to any computer or ERP program you use. Optionally, they can communicate with other machines to send and receive commands, and to receive and export data. They can also be controlled remotely via mobile phone, allowing access to all data stored within.

Temperature Statistics of Tables



Our presses record the upper and lower table temperatures for the past hour and present them in a graphical format. You can monitor temperature values minute by minute.

Energy Consumption Tracking



Our presses track their energy consumption and keep a three-month log. This allows you to easily calculate energy consumption per product and calculate your energy costs.

Multilingual Control Panel



Our presses are loaded with all the required language options based on customer preference. The desired language can be selected and used based on operator preference.

Standard Rubber Press – Standard Silicone Press



MODEL	RP403	RP406	RP410	RP610	RP615	RP620	RP915	RP920	RP925
Table Size (mm)	400 X 400			600 X 500			900 X 600		
Compression Force (250 Bar) Tons	40	80	125	125	200	250	200	250	300
Compression Force (200 Bar) Tons	30	60	100	100	150	200	150	200	250
Motor Power (kW)	3	5,5	7,5	7,5	11	15	11	15	18,5
Table Heating Power (kW)	15	15	15	25	25	25	35	35	35
Number of Cylinders	1	1	1	1	2	2	2	2	3
Cylinder Diameter	150	200	250	250	230	250	230	250	230
Stroke	200 mm			250 mm			300 mm		
Maximum Clearance	220 mm.			270 mm.			320 mm.		
Minimum Clearance	20 mm.			20 mm.			20 mm.		
Closing Speed	10 mm/sec.								

Standard Rubber Press – Standard Silicone Press



Standard Rubber Press – Standard Silicone Press



MODEL	Standard Vulcanization Press	ECO Vulcanization Press
Hydraulic Sliding Table	Standard	---
Middle and Side Extractor Mechanism	Option	Option
Hydraulic Oil Cooling Unit	Standard	Standard
Ventilation	Standard	Standard
Safety Light Barrier	Standard	Standard
Automatic Degassing	Standard	Standard
Automatic Operation and Shutdown	Standard	Standard
Electronic Pressure Monitoring	Standard	Standard
Automatic Lubrication	Option	Option
Mold Parameters Memory	Standard	Standard
Operator Delay Warning	Standard	Standard
Heating Technology	Standard	Standard
Shift Production Tracking	Option	Option
Direct Mold Heating	Option	Option
Server Connection and Remote Control	Option	Option
Temperature Statistics of Tables	Standard	Standard
Energy Consumption Tracking	Option	Option
Multilingual Control Panel	Standard	Standard



BURSAMAK MACHINE LTD



Yaylacık mh. 44. sk. No:13 16280 Nilüfer / BURSA / TURKEY



+90 224 3611940-41



@bursamak5259



www.bursamak.com



bursamak16



info@bursamak.com



bursamak



+90 532 380 78 37



bursamak